

## 12"- 300W Professional Woofer

LP 318.50/ 1100 T 8 Ω

Code Z007660

### GENERAL CHARACTERISTICS

Nominal Overall Diameter .....	318	mm
Nominal Voice Coil Diameter .....	50	mm
Magnet Weight .....	1100	g
Flux Density.....	1.10	T
Weight.....	3.78	Kg

### THIELE-SMALL PARAMETERS

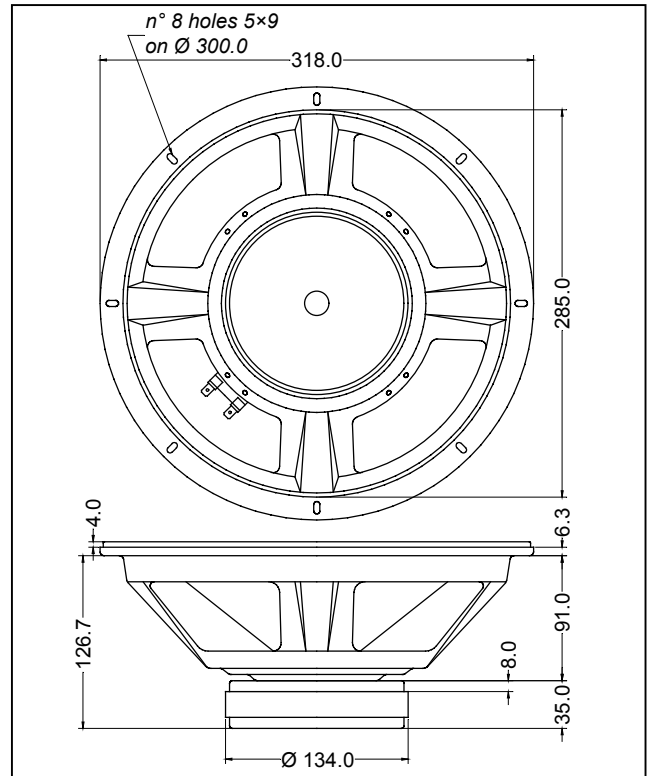
Voice Coil DC Resistance .....	$R_E$	5.95	Ω
Resonance Frequency .....	$f_s$	46.8	Hz
Mechanical Q Factor.....	$Q_{MS}$	3.07	
Electrical Q Factor.....	$Q_{ES}$	0.39	
Total Q Factor .....	$Q_{TS}$	0.35	
Mechanical Moving Mass .....	$M_{MS}$	34.0	g
Mechanical Compliance .....	$C_{MS}$	340	μm/N
Force Factor .....	$B \times l$	12.31	Wb/m
Equivalent Acoustic Volume.....	$V_{AS}$	115.0	lt.
Maximum Linear Displacement ....	$X_{MAX}$	+/-3.0	mm
Reference Efficiency .....	$\eta_0$	2.88	%
Diaphragm Area .....	$S_D$	490.9	cm <sup>2</sup>
Losses Electrical Resistance.....	$R_{ES}$	46.4	Ω
Voice Coil Inductance @ 1kHz .....	$L_E$	0.89	mH

### CONSTRUCTIVE CHARACTERISTICS

Magnet.....	Ferrite
Voice Coil Winding.....	Copper
Voice Coil Former.....	Aluminium
Cone .....	Paper
Surround.....	Treated Cloth
Dust Dome .....	Solid Paper
Basket .....	Pressed Sheet Steel

### ELECTRICAL CHARACTERISTICS

Nominal Impedance.....	8	Ω
Musical Power .....	300	W
Rated Power* .....	150	W
Sensitivity @ 1 W, 1 m .....	97.9	dB



\*rated power measured with 2 hours test with pink noise signal, 6 dB crest factor, loudspeaker mounted on enclosure

Frequency Response on IEC Baffle (DIN 45575) @ 1 W, 1 m - Impedance

