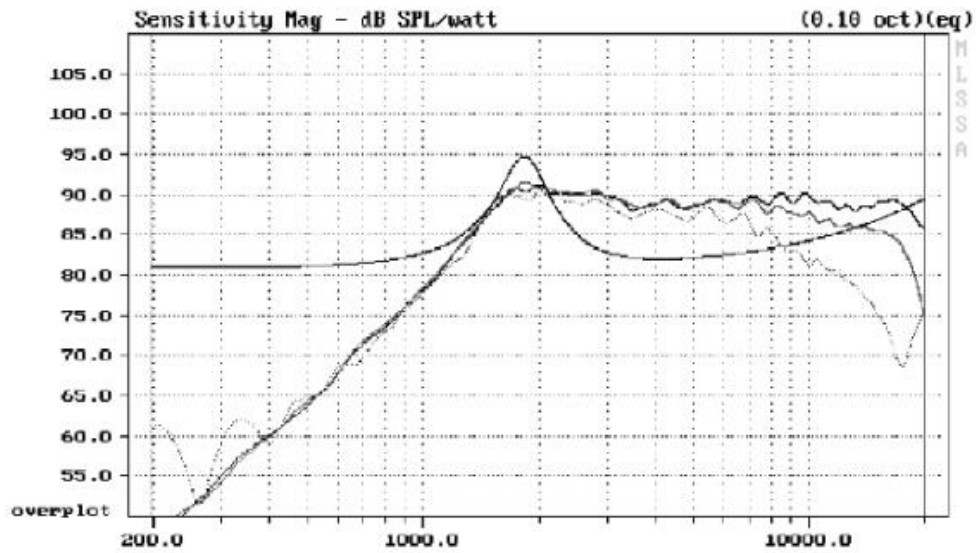




Impedance	6 ohms	V.C. Diameter	20 mm
Fs	1788 Hz	V.C. Length	1.7 mm
RMS Power (iec)	40 W	V.C. Former	aluminum
Sensitivity (2.83V/1m)	89.0 dB	V.C. Layers	2
Re	4.87 ohms	Diaphragm	titanium
Le	0.02 mH	Faceplate	polymer
Xmax	± 0.15 mm	Net Weight	50 gr

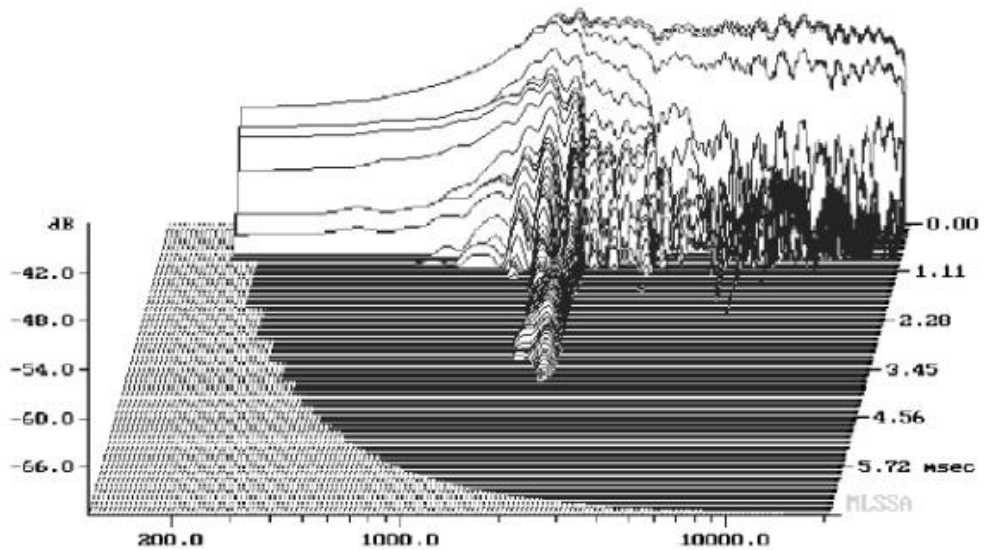
---

## Response Curve



---

## Spectral Decay Plot



---

Dimensions in mm

