

Box Properties

--Description--

Name: 1x18 sub comparison

Type: Vented Box

Shape: Prism, square

--Box Parameters--

Vb = 162,8 liters

V(total) = 190,7 liters

Fb = 30,47 Hz

F3 = 43,39 Hz

Fill = minimal

--Vents--

No. of Vents = 1

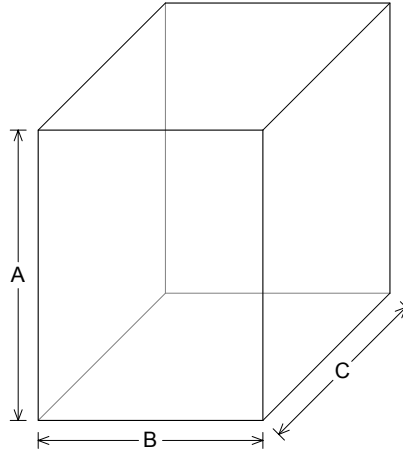
Vent shape = rectangle

Vent ends = one flush

Hv = 90, mm

Wv = 430, mm

Lv = 649,7 mm



--External Dimensions--

A = 706, mm

B = 546, mm

C = 583, mm

--Internal Dimensions--

A = 670, mm

B = 510, mm

C = 510, mm

--Wall Thickness--

Front = 55, mm

Side = 18, mm

Driver Properties

--Description--

Name: L 18P 200N

Type: Standard one-way driver

Company: RCF Precision

Serial No: 111.85.012

Comment: Lab Series

Frame: Die cast aluminum

Voice Coil: Copper on Kapton former, diameter-100 mm

--Configuration--

No. of Drivers = 1

--Driver Parameters--

Fs = 28, Hz

Qms = 7,15

Vas = 363, liters

Xmax = 8, mm

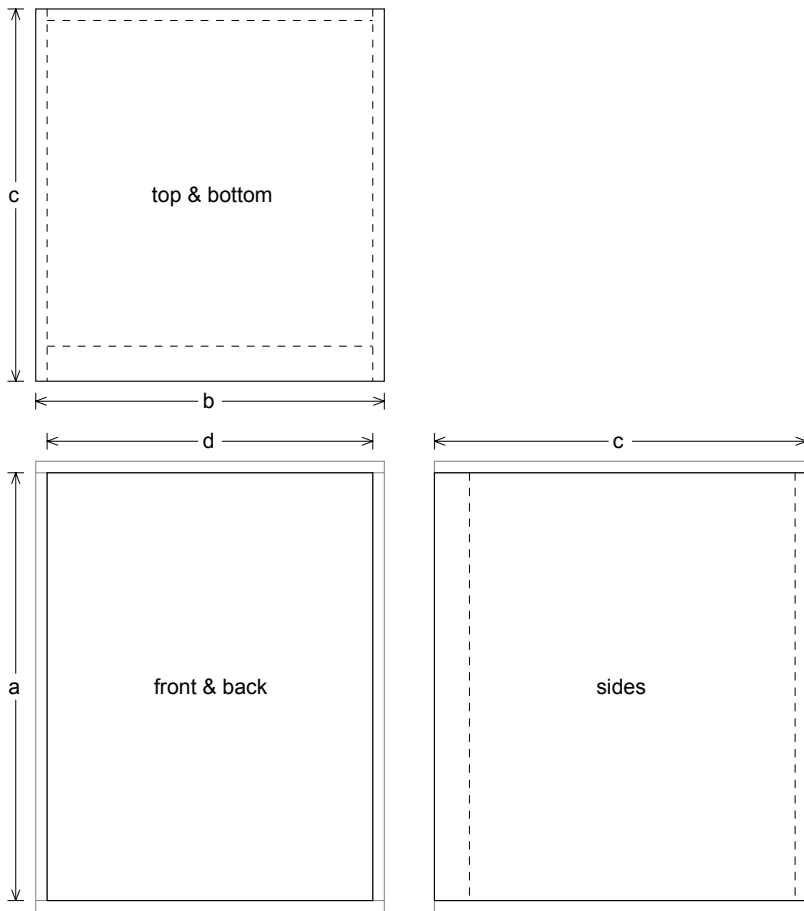
Sd = 1100 sq.cm

Qes = 0,32

Re = 6,3 ohms

Z = 8, ohms

Pe = 200, watts



Box Parts

Box Shape: Square Prism

1 Top, 1 Bottom: depth (c) = 583, mm
width (b) = 546,, thickness = 18, mm

1 Front: height (a) = 670, mm
width (d) = 510,, thickness = 55, mm

1 Back: height (a) = 670, mm
width (d) = 510,, thickness = 18, mm

2 Sides: height (a) = 670, mm
depth (c) = 583,, thickness = 18, mm

--Driver Mounting--
Mounting: Flush

--Vent Parts--

1 Top, 1 Bottom:
width (e) = 430,, length (h) = 649,7 mm
thickness = 3,175 mm

2 Sides:
height (g) = 96,35, length (h) = 649,7 mm
thickness = 3,175 mm

