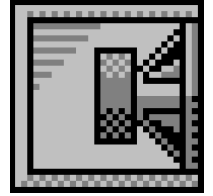


# Custom Vented Box Design

By karsten, cad



## Box Properties

### --Description--

Name: 1x15 sub comparison

Type: Vented Box

Shape: Prism, square

Finish: black warnex

Veneer: 15mm birch ply

### --Box Parameters--

Vb = 108,2 liters

V(total) = 114,9 liters

Fb = 42, Hz

F3 = 42,3 Hz

Fill = minimal

### --Vents--

No. of Vents = 1

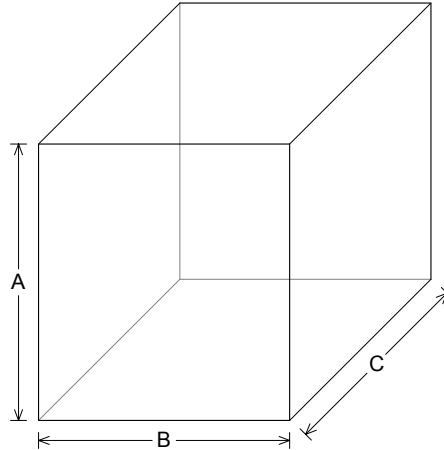
Vent shape = rectangle

Vent ends = one flush

Hv = 50, mm

Wv = 425, mm

Lv = 251,4 mm



### --External Dimensions--

A = 550, mm

B = 500, mm

C = 530, mm

### --Internal Dimensions--

A = 520, mm

B = 470, mm

C = 470, mm

### --Wall Thickness--

Front = 45, mm

Side = 15, mm

## Driver Properties

### --Description--

Name: L 15P 200AK

Type: Standard one-way driver

Company: RCF Precision

Serial No: 111.65.014

Comment: Lab Series

Frame: Die cast aluminum

Voice Coil: Copper on Kapton former, diameter-100 mm

### --Configuration--

**No. of Drivers = 1**

### --Driver Parameters--

Fs = 38, Hz

Qms = 6,8

Vas = 139, liters

Xmax = 8,5 mm

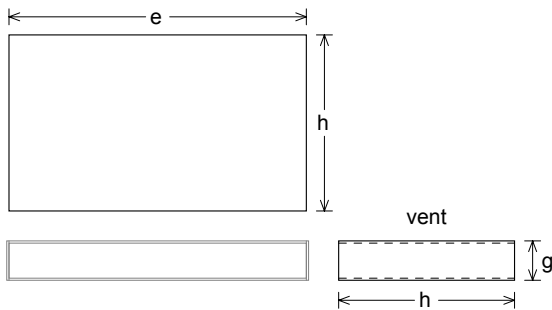
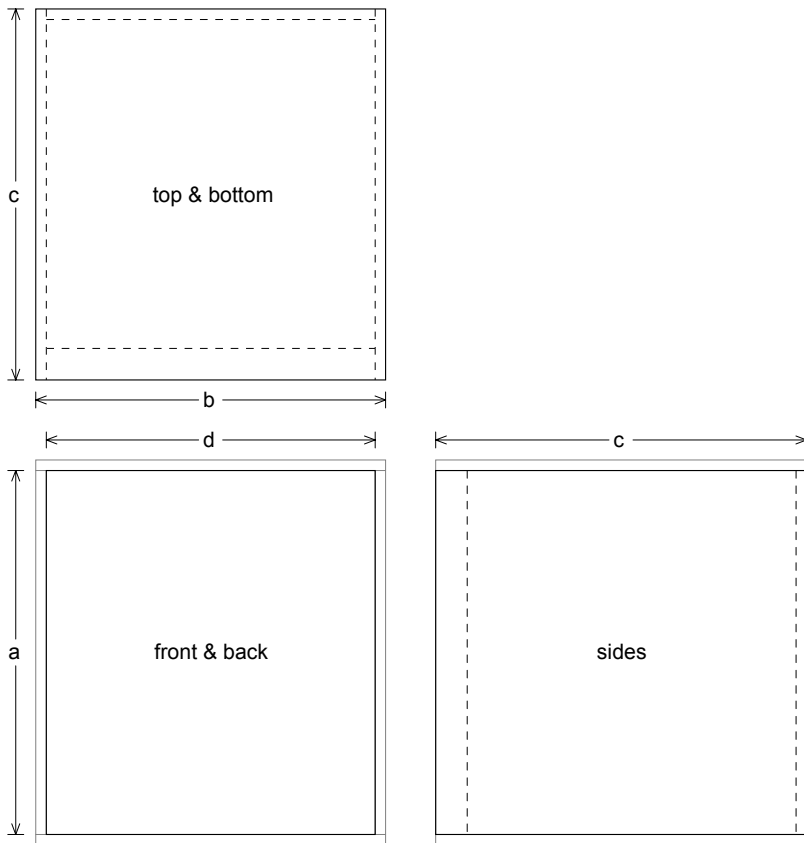
Sd = 820, sq.cm

Qes = 0,37

Re = 5,9 ohms

Z = 8, ohms

Pe = 150, watts



**Box Parts**

Box Shape: Square Prism

1 Top, 1 Bottom: depth (c) = 530, mm  
width (b) = 500,, thickness = 15, mm

1 Front: height (a) = 520, mm  
width (d) = 470,, thickness = 45, mm

1 Back: height (a) = 520, mm  
width (d) = 470,, thickness = 15, mm

2 Sides: height (a) = 520, mm  
depth (c) = 530,, thickness = 15, mm

--Driver Mounting--  
Mounting: Flush

--Vent Parts--

1 Top, 1 Bottom:  
width (e) = 425,, length (h) = 251,4 mm  
thickness = 3,175 mm

2 Sides:  
height (g) = 56,35, length (h) = 251,4 mm  
thickness = 3,175 mm

