

Box Properties

--Description--

Name: 1x18 sub comparison

Type: Vented Box

Shape: Prism, square

--Box Parameters--

Vb = 163,3 liters

V(total) = 174,7 liters

Fb = 44, Hz

F3 = 44,29 Hz

Fill = minimal

--Vents--

No. of Vents = 1

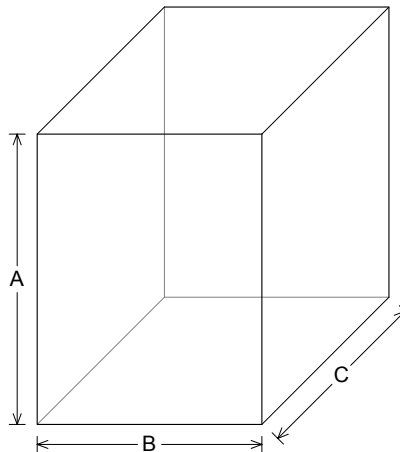
Vent shape = rectangle

Vent ends = one flush

Hv = 90, mm

Wv = 430, mm

Lv = 232,2 mm



--External Dimensions--

A = 706, mm

B = 546, mm

C = 583, mm

--Internal Dimensions--

A = 670, mm

B = 510, mm

C = 510, mm

--Wall Thickness--

Front = 55, mm

Side = 18, mm

Driver Properties

--Description--

Name: R18/100B

Type: Standard one-way driver

Company: P. Audio System Co., Ltd.

Comment: Code No. 420 18 050

Piston: Paper cone.

Suspension: Plasticised linen surround.

Dust Cap: Solid composition paper dust cap.

Frame: Cast aluminum frame.

Voice Coil: 99.3 mm, fiberglass former, edge wound copper.

Magnet: APS ferrite magnet.

--Configuration--

No. of Drivers = 1

--Driver Parameters--

Fs = 41, Hz

Qms = 7,22

Vas = 170,7 liters

Xmax = 6, mm

Sd = 1134 sq.cm

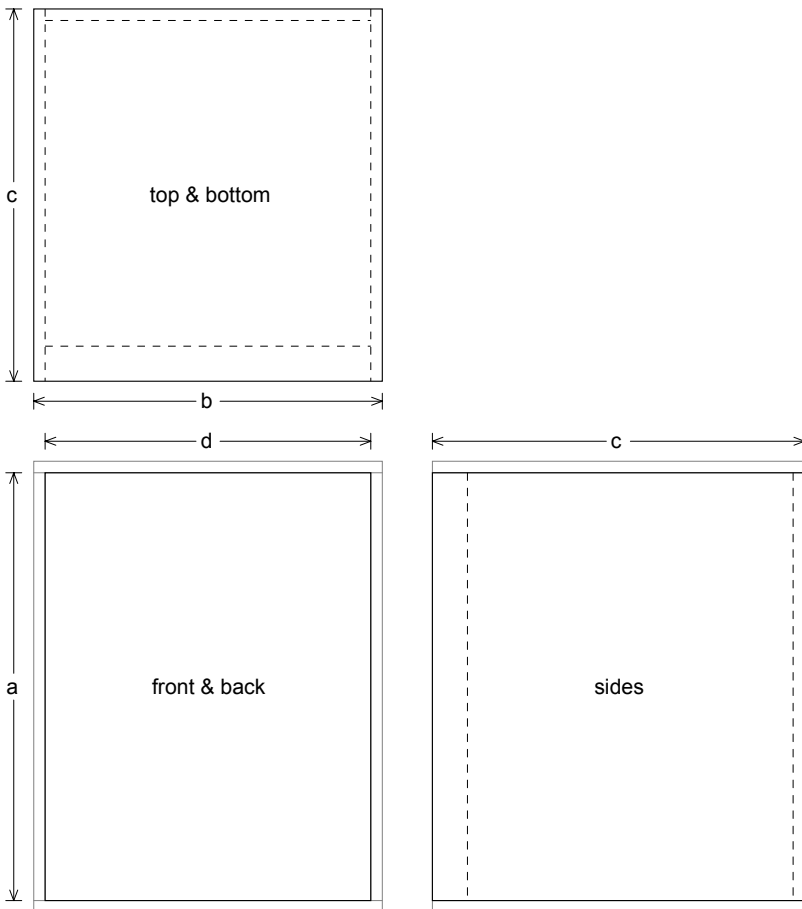
Qes = 0,31

Re = 6,5 ohms

Le = 1,72 mH

Z = 8, ohms

Pe = 500, watts



Box Parts

Box Shape: Square Prism

1 Top, 1 Bottom: depth (c) = 583, mm
width (b) = 546,, thickness = 18, mm

1 Front: height (a) = 670, mm

width (d) = 510,, thickness = 55, mm

1 Back: height (a) = 670, mm

width (d) = 510,, thickness = 18, mm

2 Sides: height (a) = 670, mm

depth (c) = 583,, thickness = 18, mm

--Driver Mounting--

Mounting: Flush

--Vent Parts--

1 Top, 1 Bottom:

width (e) = 430,, length (h) = 232,2 mm
thickness = 3,175 mm

2 Sides:

height (g) = 96,35, length (h) = 232,2 mm
thickness = 3,175 mm

