

Concept Audio Production aps- Røjlevej 8- DK 5935 Bagenkop
www.cadaudio.dk info@cadaudio.dk +45 38334048

Company Profile

We work in several areas of pro-audio;
Design and development of **Digital Power Amplifiers**
Design and development of **Switch-Mode Supplies**
Design and manufacturing of **PA Speaker Systems**
Design and manufacturing of **Flightcases**
Design and development of **HIFI Loudspeakers**
Design and development of **HIFI Amplifiers**
We have 1500 sqm factory with in-house CNC machining , SMD production line etc.

Contents

Company Profile	1
Digital Power Amplifiers	1
Digital Power Amplifiers	2
Digital Speaker Amplifiers	2
Digital Amplifier Modules	2
Bass Amplification	3
SMD & CNC production	4
OEM / Licensing	4

DPA series Digital Power Amplifiers

We have 2 series of Digital Power Amplifiers;

DPA 2000 - 2 x 1000W / 4 ohms - 19" - 1U - 5 kgs

DPA 4800 - 2 x 3500W / 2 ohms- 19" - 1U - 7 kgs

DPA 8800 - 2 x 4400W / 4 ohms - 19" - 1U - 8 kgs

DPA 8900 - 2 x 4400W / 2 ohms - 19" - 1U - 8 kgs

DPA 9000M - 1x9000W / 2 ohms - 19" - 1U - 8 kgs

The DPA series amplifiers all have switch-mode power supply, they are pwm amplifiers of latest design and all except DPA2000 have PFC (power Factor Correction). The DPA series have all features you should expect from a modern PA amplifier including peak and rms limiting, lo-cut, thermal and DC protection , fast shut-down to protect the amplifier and the load. DPA amplifiers generate 1/10 of the heat of a conventional amplifier of the same wattage...

Technology

Our PWM amplifiers use digital power conversion (class-d and switch mode) technology with power factor correction giving very high power and low weight and heat.

Applications

The sound quality is very good so they can be used for a broad variety of applications ;
Mobile PA, Mobile Disco ,
Installations, Theater use,



*DPA 4800 2x3500W digital power amplifier
19" - 1U - 7 kgs*

DPA 4800 SPECIFICATIONS:

Output Power, 8 ohms: 2 x 1100 watt

Output Power, 4 ohms: 2 x 2100 watt

Output Power , 2 ohms: 2 x 3500 watt

Freq. Response : 20 Hz - 20 kHz

THD : less than 0.1%

Input : 1.2 V - 10 Kohm - balanced XLR

Output : 4 pole Speakon

Power Input : 115-230V ac - 16-24A

Dimensions: 482 x 45 x 350mm

Weight : 7 kgs

Power rating is continuous pink noise into rated impedance

Contact us or your dealer/ distributor for prices and availability.

Trade/export prices available upon request.

Read more at www.cadaudio.dk

DA series Digital Power Amplifiers

We are happy to present a new series of digital amplifiers for rack mounting;

DA4800 – 2 x 3000W – 2 ohms – 19" – 1U – 6 kgs

DA15002 – 2 x 7500W – 2 ohms – 19" – 2U – 8 kgs

DA15002H – 2 x 7500W – 4 ohms – 19" – 2U – 8 kgs

DA15004 – 4 x 3800W – 4 ohms – 19" – 2U – 8 kgs

DA15006 – 6 x 2500W – 4 ohms – 19" – 2U – 8 kgs

The DA series are very high power pwm amplifiers combined with a very high power switch-mode power supply. They have all professional features as peak and rms limiting , lo-cut, thermal and DC protection , fast shut-down to protect the amplifier and the load.

DA Digital Amplifiers generate 1/10 of the heat of a conventional amplifier of the same wattage...

Technology

Our PWM amplifiers use digital power conversion (class-d and switch mode) technology giving very high power and low weight and heat.

Applications

The sound quality is very good so they can be used for a broad variety of applications ;

Mobile PA,

Mobile Disco ,

Installations, Theater use,



DA15002 – 2 x 7500W – 19" – 2U – 10 kgs

DA 15002 SPECIFICATIONS:

Output Power, 8 ohms: 2000 watt / ch.

Output Power, 4 ohms: 3800 watt / ch.

Output Power , 2 ohms: 7500 watt / ch.

Freq Response : 20 Hz - 20 kHz

THD : less than 0.1%

Input : 1.2 V - 10 Kohm - balanced XLR

Output : 4 pole Speakon

Power Input : 115-230V ac - 16-32A

Dimensions: 482 x 88 x 330mm

Weight : 8 kgs

Power rating is continuous pink noise into rated impedance

Contact us or your dealer/ distributor for prices and availability.

Trade/export prices available upon request.

Read more at www.cadaudio.dk

DSA series Digital Speaker Amplifiers

We have a range of Digital Speaker Amplifiers from 250W to 2000W and Biamp-models 1000W + 250W and 2000W + 500W.

DSA 250 250W / 4 ohms, peak limiter, switch-mode supply, 1.5 kgs

DSA 500 500W / 4 ohms, peak limiter, switch-mode supply, 1.6 kgs

DSA 1000 1000W / 4 ohms, peak limiter, switch-mode supply, 1.7 kgs

DSA 2000 , 2000W / 4 ohms, peak limiter, switch-mode supply, 1.8 kgs

DSA 1250 , 1000W + 250W / 4 ohms, peak limiters, active crossovers, switch-mode supply , 2.5 kgs

DSA 2500 , a 2000W + 500W / 4 ohms, peak limiter, active crossovers, switch-mode supply , 2.8 kgs

All models have balanced input, link output, volume/gain control, status led indication, overcurrent protection, overtemp. protection, soft-start.

Special versions, oem designs , licensing is available upon request.

Applications , all kinds of active loudspeakers , from studio monitors, pa cabinets, subwoofers etc, Read more at www.cadaudio.dk



DSA 1000 1000W speaker amplifier

Digital Amplifier Modules

We are happy to announce a new series of PWM / Class-D Digital amplifiers designed to give very high performance in audio quality and to deal with all aspects of amplifier use and applications including amplifier + power supply combination, multichannel use, channel synchronization, protection circuits, active crossover use, etc.

They are all full bandwidth modules (20 Hz - 20 kHz+) and are very usefull for a broad range of applications from HIFI, Home Cinema to Pro Audio, Active Loudspeakers, Installation...

Sound quality is very good indeed and THD + N is 0.02% or better.

The A-modules are PWM amplifier modules for external power supply and the ASW-modules are very compact high-performance PWM amplifier + Switch Mode Power Supply combination boards.

The ASW modules can power an A-module for 2-ch / stereo use and the CAD 1000ASW can power 1-2 CAD 250A for biamp use (1000W + 250W into 4 ohms) or an extra CAD 1000A and the CAD 2000ASW can power 1-2 CAD 500A, again for biamp use (2000W + 500W into 4 ohms) or an extra CAD 2000A module.

D250A 250W / 4 ohms 100x80x30mm 150g 2x45VDC
D500A 500W / 4 ohms 100x80x30mm 200g 2x65VDC
D1000A 1000W / 4 ohms 120x80x35mm 250g 2x45VDC
D2000A 2000W / 4 ohms 120x80x35mm 300g 2x65VDC

D250ASW 250W / 4 ohms 165x100x35mm 350g 115/230V AC
D500ASW 500W / 4 ohms 165x100x35mm 350g 115/230V AC
D1000ASW 1000W / 4 ohms 180x100x40mm 350g 115/230V AC
D2000ASW 2000W / 4 ohms 180x100x40mm 400g 115/230V AC

Lets look at the **250ASW** board, it is 100 x 165 x 35mm overall (4" x 5.5" x 1,5" high) , it is powered by 115V AC or 230V AC, it has a balanced input connector and a volume control connector, it has an expansion header for an active crossover + equalizer, it has a Channel-link connector with clock and signal from Ch-A crossover, neat and versatile for multichannel, bi-amp and various applications.

The output stage is a high power half-bridge design with high power fets driven by a fast high-current driver, the amplifier is a clock based design with a high precision clock. The clock has a header so it can clock other channels in a multichannel setup and the power supply has a DC output connector to power a **CAD 250A** board. The PWM signal is made in our proprietary PWM processor using discrete components and overall feedback after the output filter as this gives very good audio performance.

EMI and RFI is very good indeed and power output is 250W into 4 ohms and the amplifier is completely stable and has no problems driving 2 ohms. The amplifier has a number of protection circuits including a peak limiter, an over current shutdown circuit, an undervoltage / soft start circuit, etc.



D1000A 1000W pwm amplifier module

D1000A specifications

Frequency range (+0, -1dB) ;
20 - 20.000 Hz

Nominal load impedance ;
4-16ohms

Output power (4ohms ohms) ;
1000W

Harmonic distortion ;
(1000Hz/4ohms) <0.02% at
900W / 4ohms

Amplifier protection ;
Overcurrent shutdown, peak
limiter

Power requirements 2 x 45V DC
+ (+18VDC @ 0.25A)

Size 120 x 80 x 35mm

Weight 300g



D250A - 250W pwm amplifier module

Bass Amplification

Together with world famous danish bass player , Jesper Lundgaard , we have developed a series of Bass amplifiers, including a small combo ARCO DB510 and a series of bass heads and bass cabinets.

The ARCO DB510 is a small and lightweight combo amplifier designed for acoustic and electric bass, it is 38 x 38 x 30 cm (15" x 15" x 12") and weight 9 kgs , it has a 500W digital power amplifier with switch-mode power supply and it has a high power and high efficiency 10" neodymium driver. External speaker can be connected and the combo alone is loud enough for most applications and substantially louder than other small and lightweight combos on the market.



ARCO DB510 500W bass combo amplifier

CNC and SMD Production.

We have our own SMD line for small/medium series of amplifiers and other electronic products.



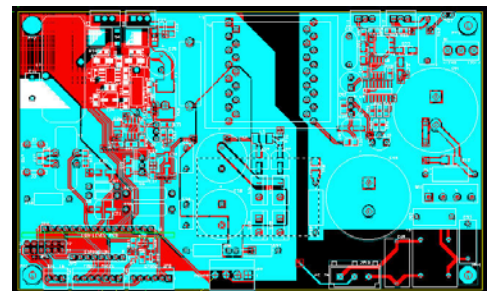
We have our own CNC centre for small/medium series of pa cabinets, flightcases etc.



We have developed and produced PA loudspeakers for many years and have experience with their design as well as usage, we feel this is quite important to have a total view of all aspects in designing and developing state-of-the-art amplifiers and loudspeakers for the demanding PA requirements of today, for installation touring or other.

OEM / Licensing.

Our amplifier designs are available as finished amplifiers, as oem products or for licensing. Contact us for details and if you have special ideas, requirements etc. We have a strong knowledge base and feel sure we can design cost-effective amplifiers that will meet all your requirements too. Again here we use the latest software/tools in design, simulation, layout.



Contact details:

Concept Audio Production aps
Røjlevej 8
5935 Bagenkop
Denmark
Phone/Fax +45 38334048
E-mail ; info@cadaudio.dk
Web; www.cadaudio.dk
www.digiamps.com