

DIGIAMPS.COM

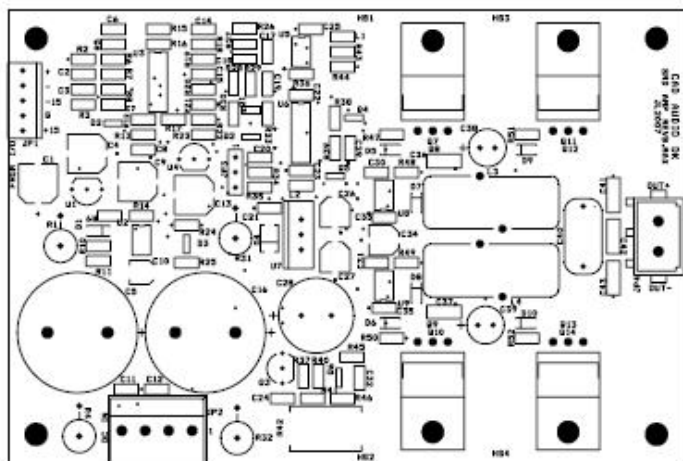


D700A PWM Amplifier



D700A specs

Rated power 4 ohms	400W
Power supply max.	2 x 45V DC
Aux. supply	16V DC
Freq. Range (+0, -1dB)	20 - 20.000 Hz
THD + N	0.02% typ.
Dynamic Range	110 dB typ.
Max. output current	20A
Min. load impedance	4 ohms
Damping Factor	400 typ.
Input voltage	1V - 10 k - balanced
Operation	Full bridge amplifier
DC-servo	yes
Peak limiter	yes
Dimensions	112 x 76 x 25mm
Heatsink	On board
Available as sample	yes
Available as OEM design	yes



D700A is a PWM /Class-D amplifier designed to give very high performance in audio quality and to deal with all aspects of amplifier use and applications including amplifier + power supply combination, multichannel use , active crossover use, etc.

Power output is 700 W into 4 ohms, overcurrent protection is likely to operate with continuous high power levels into 2 ohms.

D700A is a full bandwidth module (20 kHz power bw) and can be used for a broad range of applications from HIFI, Home Cinema to Pro Audio, Active Speakers, Installation... Sound quality is very good indeed and THD + N is 0.02% or better.

The D700A can be powered from a linear supply or from a switch-mode supply .

D700A has these connections:

- * Balanced input header (3-pin molex)
- * +/- 15V supply for preamp, crossover etc.
- * Power input (4-pin connector) 2 x 55VDC + 16VDC
- * Speaker output

Connectors.

Power Input – JP3

1	+45V
2	GND
3	-45V
4	+16V flt

Speaker Output – JP5

1 - + out

2 - -out

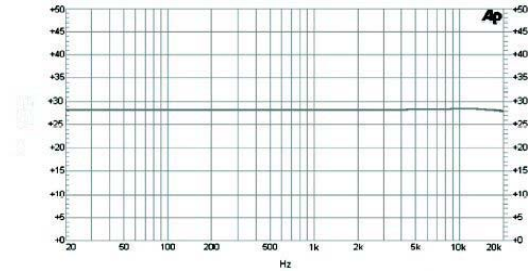
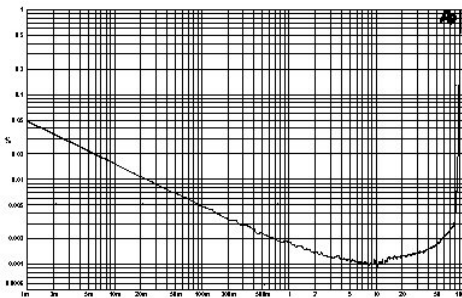
Vol contr. – JP1

1	GND
2	From vol
3	To vol

Input /meter– JP2

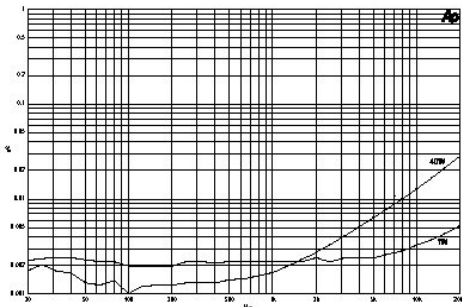
1	+15V
2	GND
3	-15V
4	- IN
5	+IN

Performance Graphs.



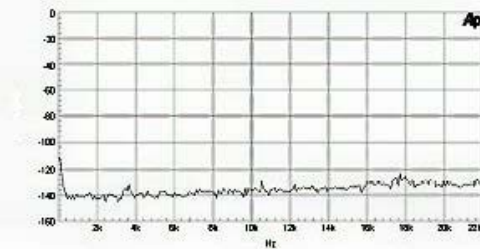
Frequency response – 8 ohms

THD vs. Power Output

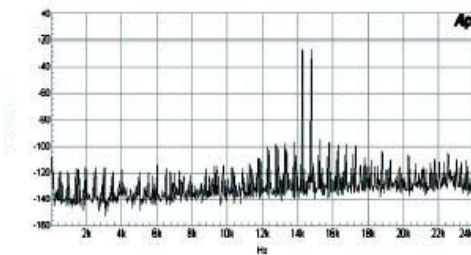


CCIF & IMD distortion – 14 kHz and 15 kHz

THD vs. Power Output and frequency



Noise Floor



CCIF & IMD distortion - 0 db= 400W

