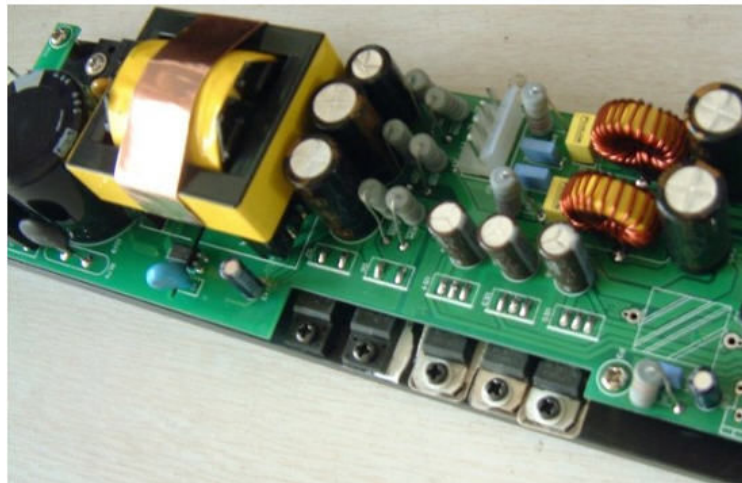
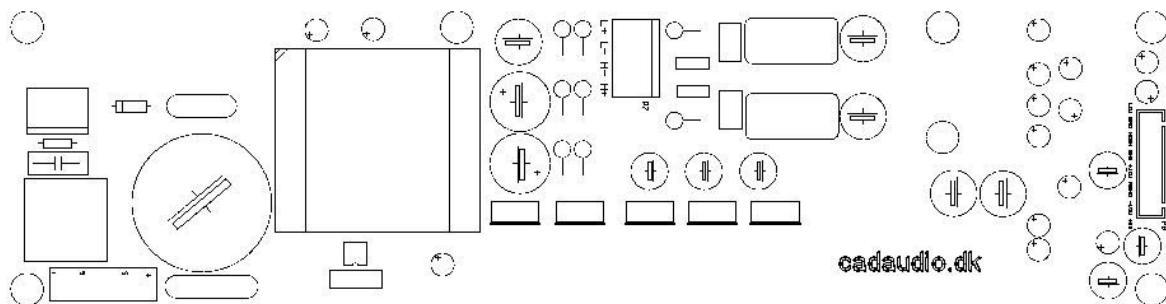


D200+50ASW2 PWM Amplifier + SMPS



D200+50ASW2 is a 2-ch class-d power amplifier with additional linear amplifier for the high frequencies + on-board switch-mode power supply. D200+50ASW2 is a versatile and compact solution for many applications in the audio field mainly bi-amped active speakers. D200+50ASW2 is rated at 200W into 4 ohms + 50W for the high frequencies and has several means of protecting the amplifier and the load, overcurrent protection, thermal overload protection, soft-start etc. etc.



D200+50ASW2 mechanical outline

Amplifier specification	
Rated power 4 ohms lo	200W
Rated power 4 ohms high	50W
Power supply	110 to 240V AC
Aux. Supplies outputs	+15V, -15V . +5V all regulated DC
Freq. Range (+0, -1dB)	22 – 20.000 Hz
THD + N	0.05% typ.
Dynamic Range	110 dB typ.
Max. output current	9A
Min. load impedance	4 ohms
Damping Factor	400 typ.
Input voltage	1V - 40 k
Operation	Full bridge amplifier with smps
Peak limiter	yes
Dimensions	250 x 65 x 50mm
Heatsink	Optional

D200+50ASW2 PWM Amplifier + SMPS

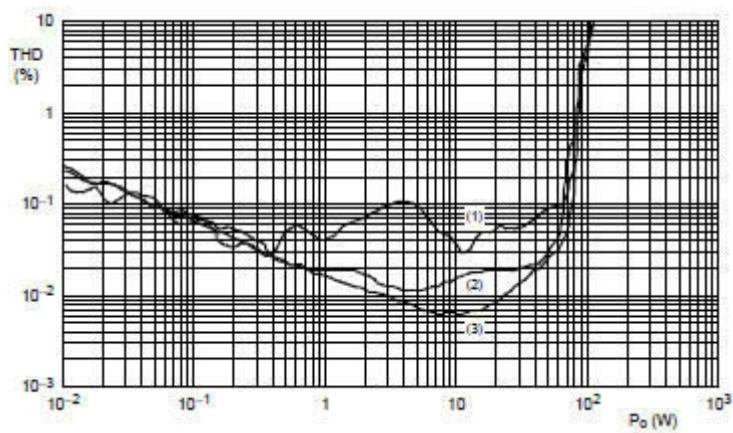
Header specifications.

Power Input	P12
1	AC Live
2	AC Neutral

Speaker Outputs	P7
1	+ Out CH1 LO
2	-Out CH1 LO
3	+ Out CH2 HIGH
4	-Out CH2 HIGH

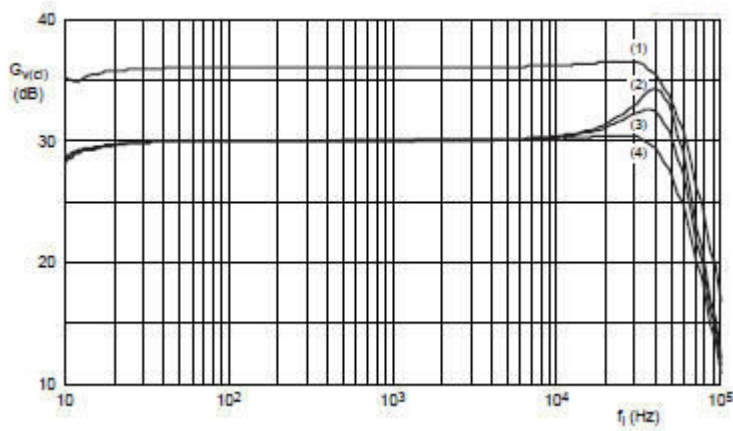
Inputs	P8
1	IN LO
2	GND
3	IN HIGH
4	GND
5	
6	+15V
7	GND
8	-15V
9	+5V

Performance Graphs

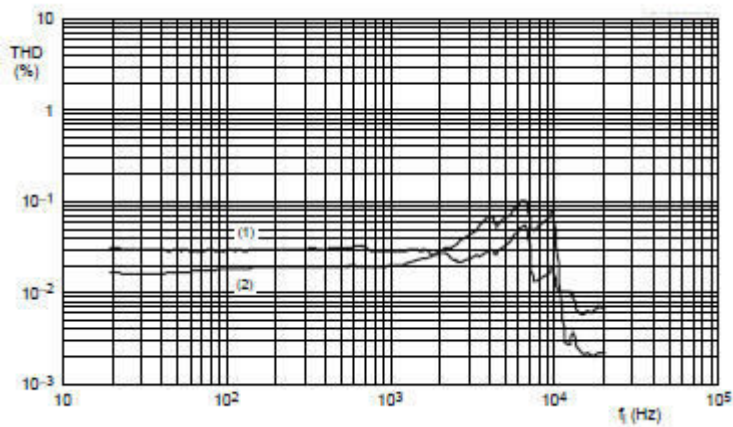


THD vs. Power Output – (1) 6 kHz , (2) 1 kHz , (3) 100 Hz , SE 4 ohms

D200+50ASW2 PWM Amplifier + SMPS



Freq Response (2) 4 ohms , (1) 8 ohms



THD + N vs. Frequency – 8 ohms