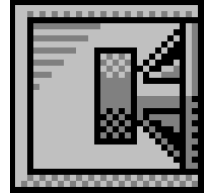


# Custom Vented Box Design

By karsten, cad



## Box Properties

### --Description--

Name: 1x15 sub comparison

Type: Vented Box

Shape: Prism, square

Finish: black warnex

Veneer: 15mm birch ply

### --Box Parameters--

Vb = 108,5 liters

V(total) = 114,9 liters

Fb = 50, Hz

F3 = 50,27 Hz

Fill = minimal

### --Vents--

No. of Vents = 1

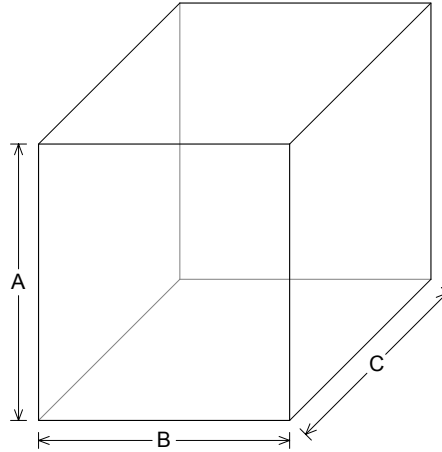
Vent shape = rectangle

Vent ends = one flush

Hv = 55, mm

Wv = 425, mm

Lv = 165,6 mm



### --External Dimensions--

A = 550, mm

B = 500, mm

C = 530, mm

### --Internal Dimensions--

A = 520, mm

B = 470, mm

C = 470, mm

### --Wall Thickness--

Front = 45, mm

Side = 15, mm

## Driver Properties

### --Description--

Name: BX15-4085

Type: Standard one-way driver

Company: Celestion International Ltd.

Voice Coil: 4 in, copper on Kapton former

Magnet: 126 oz

### --Configuration--

No. of Drivers = 1

### --Driver Parameters--

Fs = 38, Hz

Qms = 8,055

Vas = 154,1 liters

Xmax = 3,25 mm

Sd = 850, sq.cm

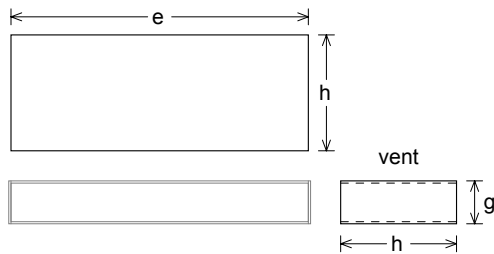
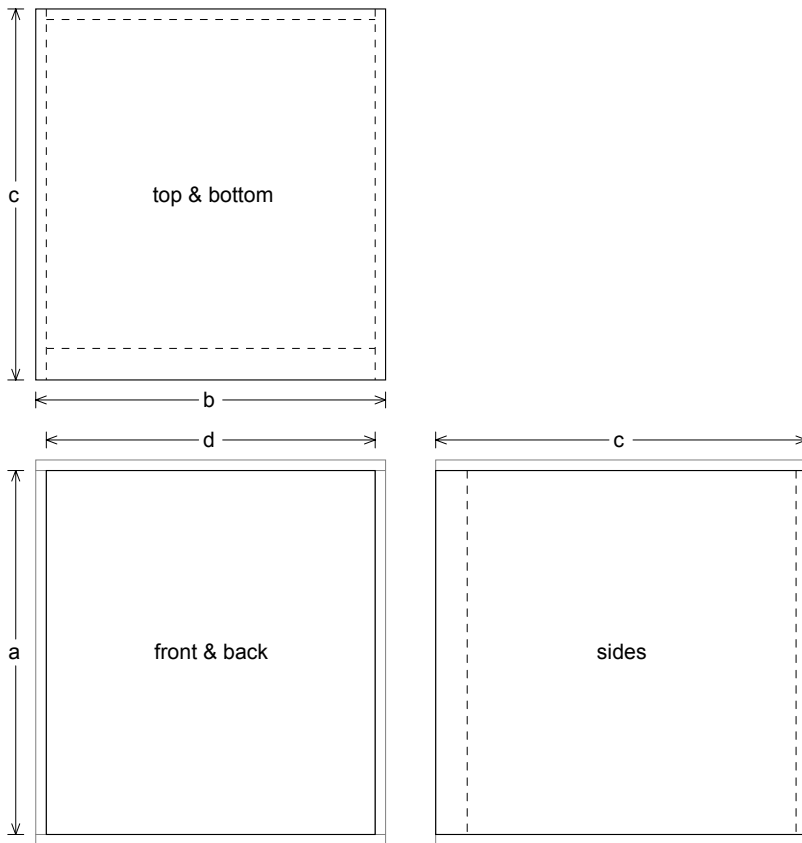
Qes = 0,247

Re = 5,84 ohms

Le = 1,47 mH

Z = 8, ohms

Pe = 600, watts



**Box Parts**

Box Shape: Square Prism

1 Top, 1 Bottom: depth ( $c$ ) = 530, mm  
width ( $b$ ) = 500,, thickness = 15, mm

1 Front: height ( $a$ ) = 520, mm  
width ( $d$ ) = 470,, thickness = 45, mm

1 Back: height ( $a$ ) = 520, mm  
width ( $d$ ) = 470,, thickness = 15, mm

2 Sides: height ( $a$ ) = 520, mm  
depth ( $c$ ) = 530,, thickness = 15, mm

--Driver Mounting--  
Mounting: Flush

--Vent Parts--

1 Top, 1 Bottom:  
width ( $e$ ) = 425,, length ( $h$ ) = 165,6 mm  
thickness = 3,175 mm

2 Sides:  
height ( $g$ ) = 61,35, length ( $h$ ) = 165,6 mm  
thickness = 3,175 mm

