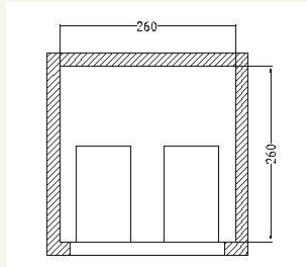
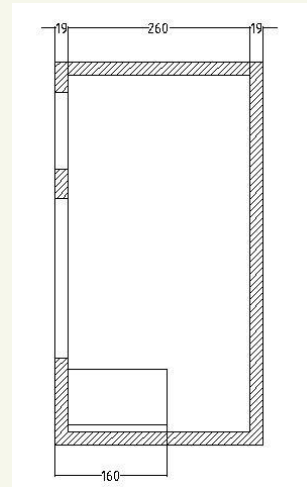
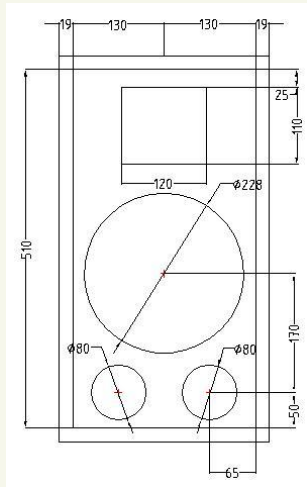




Box 10



Specifications

LF Driver	10NDL64
HF Driver	DE160
Horn	ME15
Cabinet Type	Bass Reflex
Box Volume	33 dm ³
Tuning Frequency	55 Hz
Crossover Frequency	2.0 kHz
Nominal Impedance	8 ohm
Minimum Impedance	6.5 ohm
Frequency Range	75 - 20000 Hz
Nominal Power Handling	200 W
Continuous Power Handling	400 W
Sensitivity (1W/1m)	95 dB
Max. Peak SPL	127 dB
Max. Long Term SPL	121 dB

