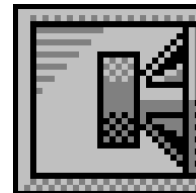


Custom Vented Box Design

By karsten, cad



Box Properties

--Description--

Name: CAD 181N

Type: Vented Box

Shape: Prism, square

--Box Parameters--

Vb = 152,4 liters

V(total) = 174,5 liters

Fb = 50, Hz

F3 = 48,51 Hz

Fill = minimal

--Vents--

No. of Vents = 1

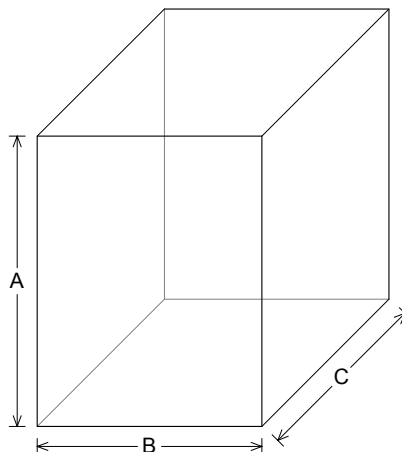
Vent shape = rectangle

Vent ends = one flush

Hv = 140, mm

Wv = 430, mm

Lv = 284,3 mm



--External Dimensions--

A = 706, mm

B = 546, mm

C = 583, mm

--Internal Dimensions--

A = 670, mm

B = 510, mm

C = 510, mm

--Wall Thickness--

Front = 55, mm

Side = 18, mm

Driver Properties

--Description--

Name: 18 G50

Type: Standard one-way driver

Company: Acustica Beyma, S. A.

Piston: Paper cone

Suspension: Plasticised cloth surround

Dust Cap: Paper

Frame: Die cast aluminium

Voice Coil: Edgewound aluminium

Terminals: Push

Magnet: Vented structure, Weight - 11.5 kg

--Configuration--

No. of Drivers = 1

--Driver Parameters--

Fs = 40, Hz

Qms = 12,05

Vas = 212, liters

Xmax = 9, mm

Sd = 1266 sq.cm

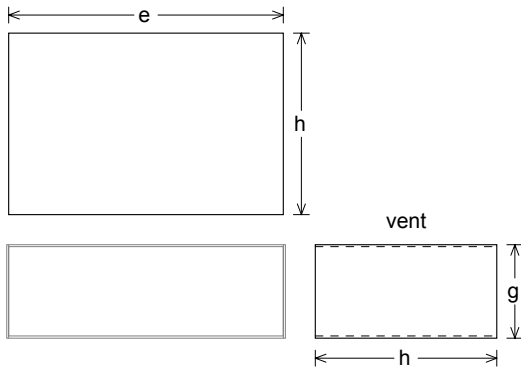
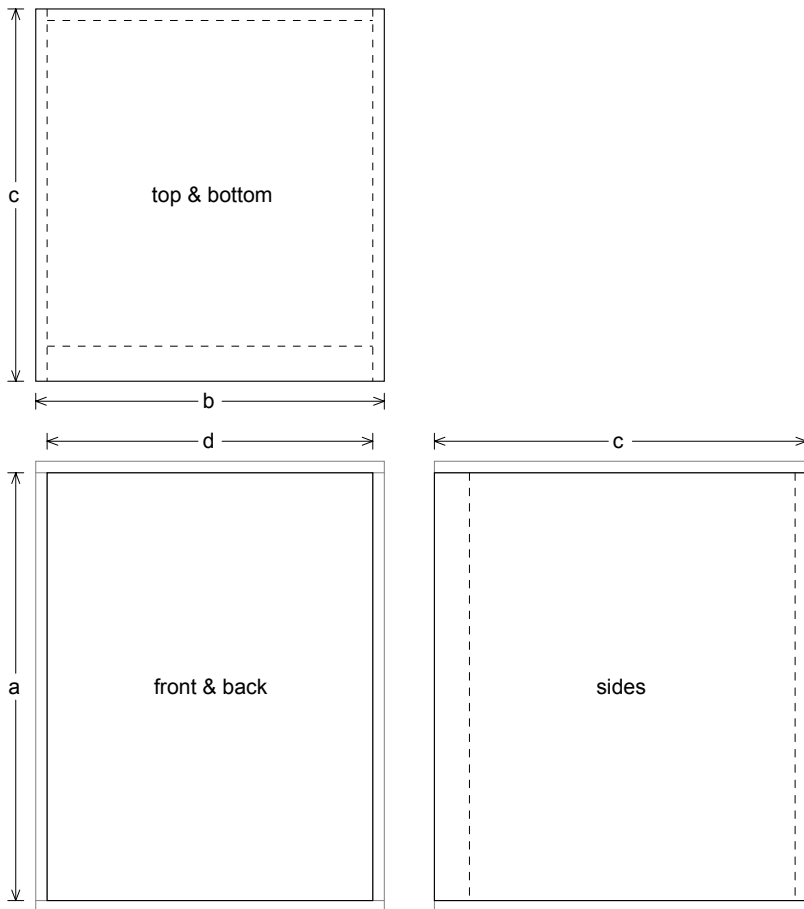
Qes = 0,334

Re = 6,1 ohms

Le = 2, mH

Z = 8, ohms

Pe = 800, watts



Box Parts

Box Shape: Square Prism

1 Top, 1 Bottom: depth (c) = 583, mm
width (b) = 546,, thickness = 18, mm

1 Front: height (a) = 670, mm

width (d) = 510,, thickness = 55, mm

1 Back: height (a) = 670, mm

width (d) = 510,, thickness = 18, mm

2 Sides: height (a) = 670, mm

depth (c) = 583,, thickness = 18, mm

--Driver Mounting--

Mounting: Flush

--Vent Parts--

1 Top, 1 Bottom:

width (e) = 430,, length (h) = 284,3 mm
thickness = 3,175 mm

2 Sides:

height (g) = 146,4, length (h) = 284,3 mm
thickness = 3,175 mm

