

Box Properties

--Description--

Name: 1x18 sub comparison

Type: Vented Box

Shape: Prism, square

--Box Parameters--

Vb = 152,1 liters

V(total) = 174,5 liters

Fb = 48, Hz

F3 = 45,24 Hz

Fill = minimal

--Vents--

No. of Vents = 1

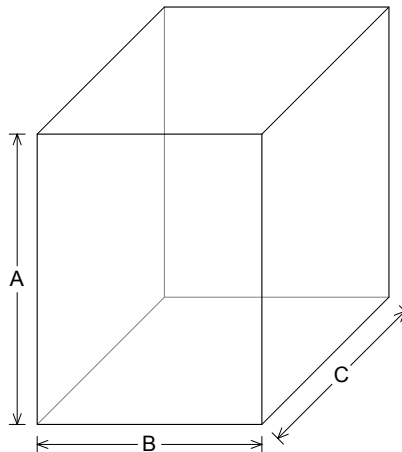
Vent shape = rectangle

Vent ends = one flush

Hv = 140, mm

Wv = 430, mm

Lv = 327,5 mm



--External Dimensions--

A = 706, mm

B = 546, mm

C = 583, mm

--Internal Dimensions--

A = 670, mm

B = 510, mm

C = 510, mm

--Wall Thickness--

Front = 55, mm

Side = 18, mm

Driver Properties

--Description--

Name: 18 PZB 100

Type: Standard one-way driver

Company: B&C Speakers

Suspension: Double silicone spider.

Voice Coil: 100 mm (4 inch) copper coil. Fiberglass former.

Magnet: Vented.

--Configuration--

No. of Drivers = 1

--Driver Parameters--

Fs = 30, Hz

Qms = 8,8

Vas = 297, liters

Xmax = 8, mm

Sd = 1134 sq.cm

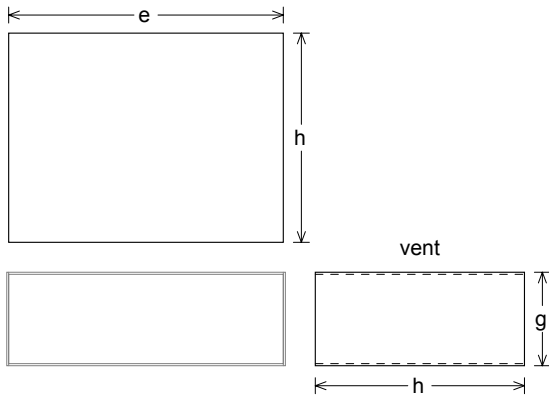
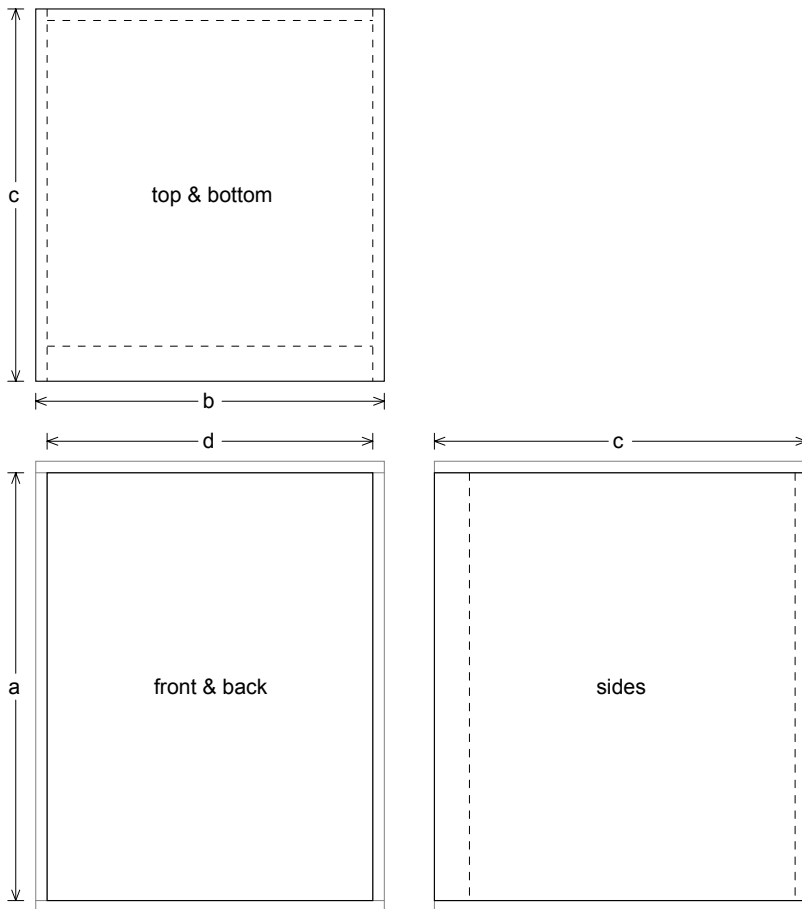
Qes = 0,25

Re = 5,3 ohms

Le = 2,1 mH

Z = 8, ohms

Pe = 700, watts



Box Parts

Box Shape: Square Prism

1 Top, 1 Bottom: depth (c) = 583, mm
width (b) = 546,, thickness = 18, mm

1 Front: height (a) = 670, mm
width (d) = 510,, thickness = 55, mm

1 Back: height (a) = 670, mm
width (d) = 510,, thickness = 18, mm

2 Sides: height (a) = 670, mm
depth (c) = 583,, thickness = 18, mm

--Driver Mounting--
Mounting: Flush

--Vent Parts--

1 Top, 1 Bottom:
width (e) = 430,, length (h) = 327,5 mm
thickness = 3,175 mm

2 Sides:
height (g) = 146,4, length (h) = 327,5 mm
thickness = 3,175 mm

