

6" - 160W Midrange

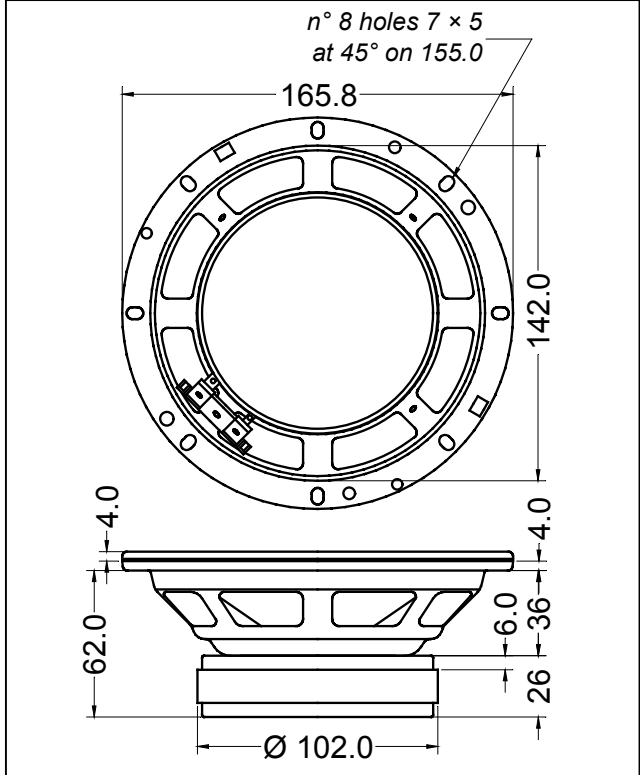
LP 165.38/ 426 MR 8 Ω

Code Z004040

GENERAL CHARACTERISTICS		
Nominal Overall Diameter	165	mm
Nominal Voice Coil Diameter	38	mm
Magnet Weight	426	g
Flux Density.....	1.05	T
Weight.....	1.40	Kg

ELECTRICAL CHARACTERISTICS		
Nominal Impedance.....	8	Ω
Musical Power	160	W
Rated Power*	80	W
Sensitivity @ 1 W, 1 m	91.9	dB

THIELE-SMALL PARAMETERS		
Voice Coil DC Resistance	R_E	6.00 Ω
Resonance Frequency	f_s	109.5 Hz
Mechanical Q Factor.....	Q_{MS}	3.35
Electrical Q Factor.....	Q_{ES}	0.79
Total Q Factor	Q_{TS}	0.64
Mechanical Moving Mass	M_{MS}	9.7 g
Mechanical Compliance	C_{MS}	216 μm/N
Force Factor	$B \times l$	7.14 Wb/m
Equivalent Acoustic Volume.....	V_{AS}	4.6 lt.
Maximum Linear Displacement	X_{MAX}	+/-1.0 mm
Reference Efficiency	η_0	0.73 %
Diaphragm Area	S_D	122.7 cm ²
Losses Electrical Resistance.....	R_{ES}	25.4 Ω
Voice Coil Inductance @ 1kHz	L_E	0.61 mH



CONSTRUCTIVE CHARACTERISTICS	
Magnet.....	Ferrite
Voice Coil Winding.....	Copper
Voice Coil Former.....	Epotex
Cone	Paper
Surround.....	Treated Cloth
Dust Dome	Paper Ogive
Basket	Pressed Sheet Steel

*rated power measured with 2 hours test with pink noise signal, 6 dB crest factor, loudspeaker mounted on enclosure

Frequency Response on IEC Baffle (DIN 45575) @ 1 W, 1 m - Impedance

