

15CXN76

Coaxials - 15.0 Inches

- 800 W continuous program power capacity
- 80° nominal coverage
- 40 - 18000 Hz response
- 99 dB sensitivity
- Single Neodymium magnet assembly
- 50.5 mm (2") HF unit exit diameter
- Compatible with XO-4 crossover network



Specifications

Nominal diameter	380 mm (15.0 in)
Nominal impedance	8 Ω
Minimum impedance lf	6.0 Ω
Minimum impedance hf	8.0 Ω
Frequency range	40 - 18000 Hz
Dispersion angle ¹	80 °
Magnet material	Neodymium Ring

Specifications LF Unit

LF Sensitivity ²	99.0 dB
LF Nominal Power Handling ³	400 W
LF Continuous Power Handling ⁴	800 W
LF Voice Coil Diameter	76 mm (3.0 in)
LF Winding Material	Copper

Specifications HF Unit

HF Sensitivity ⁵	105.0 dB
HF Nominal Power Handling ⁶	80 W
HF Continuous Power Handling ⁷	160 W
HF Voice Coil Diameter	75 mm (3.0 in)

Service Kit

Replacement diaphragm	MMD9028M
-----------------------	----------

1. Included by -6 dB down points.
2. Applied RMS Voltage is set to 2.83V.
3. 2 hours test made with continuous pink noise signal (6 dB crest factor) within the range Fs-10Fs. Power calculated on rated minimum impedance. Loudspeaker in free air.
4. Power on Continuous Program is defined as 3 dB greater than the Nominal rating.

Specifications HF Unit

HF Winding Material	Aluminium
Diaphragm material	Polyester/Titanium
Recommended crossover ⁸	1.2 kHz

Parameters

Fs	38 Hz
Re	5.1 Ω
Qes	0.3
Qms	5.8
Qts	0.28
Vas	246.0 dm ³ (8.6 ft ³)
Sd	855.0 cm ² (132.5 in ²)
η_0	3.7 %
Xmax	4.5 mm
Xvar	6.0 mm
Mms	82 g
Bl	17.8 Txm
Le	0.9 mH
EBP	126 Hz

Mounting And Shipping Info

Overall diameter	393 mm (15.5 in)
Bolt circle diameter	374 mm (14.7 in)
Baffle cutout diameter	354 mm (13.94 in)
Depth	198 mm (7.8 in)
Flange and gasket thickness	16 mm (0.62 in)
Net weight	5.6 kg (12.3 lb)
Shipping units	1
Shipping weight	7.0 kg (15.4 lb)
Shipping box	450x450x290 mm (17.7x17.7x11.4 in)

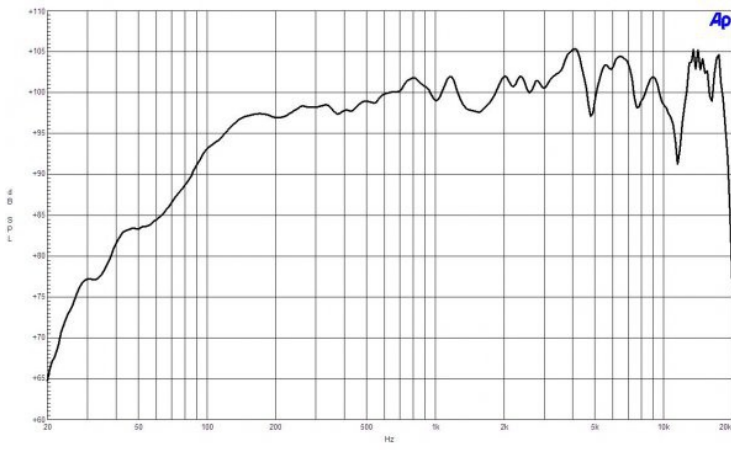
Crossover

Model	XO-4
Filter Type	Two way
Nominal Impedance	8.0 Ω
Low-pass slope	6.0 dB/oct
High-pass slope	12.0 dB/oct
Overall Dimensions	142x107 mm (5.6x4.2 in)
Weight	0.6 kg (1.3 lb)

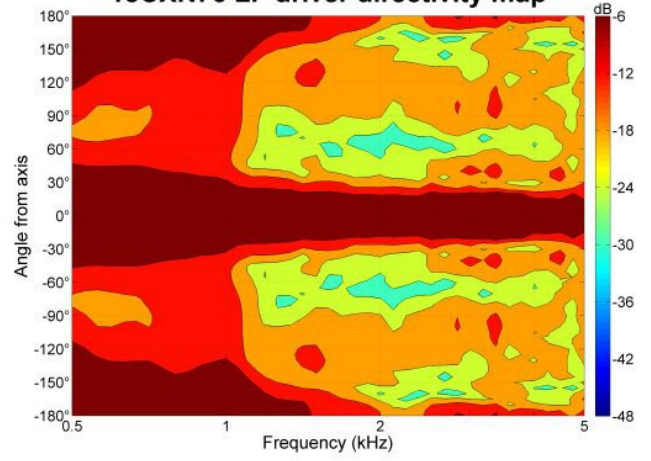
Service Kit

Service kit lf	RCK15CXN768
----------------	-------------

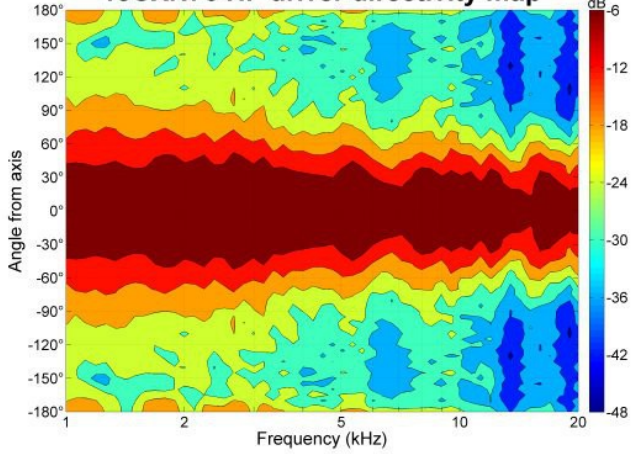
5. Applied RMS Voltage is set to 2.83V.
6. 2 hour test made with continuous pink noise signal (6 dB crest factor) within the range from the recommended crossover frequency to 20 kHz. Power calculated on rated minimum impedance. Loudspeaker in free air.
7. Power on Continuous Program is defined as 3 dB greater than the Nominal rating.
8. 12 dB/oct. or higher slope high-pass filter.



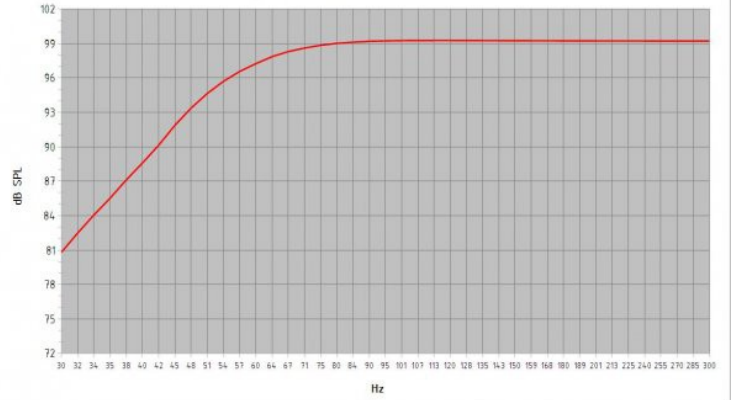
15CXN76 LF driver directivity map



15CXN76 HF driver directivity map



Frequency Response (2,83 Vrms/1 m)



Model:	15 CXN 76		
Enclosure Type:	Bass Reflex		
Internal Net Volume (Liters):	100	Port Area (cm ²):	169.8
Tuning Frequency (Hz):	50	Port Length (cm):	7.5
Frequency (-3 dB) (Hz):	55.7		
Excursion Limited Maximum SPL at 1 meter (dB): 121.3 equal to 214.5 Watts (Bass Band Power Rating)			
Thermal Limited Maximum SPL at 1 meter (dB): 124.0 equal to 400.0 Watts (Mid Band Power Rating)			