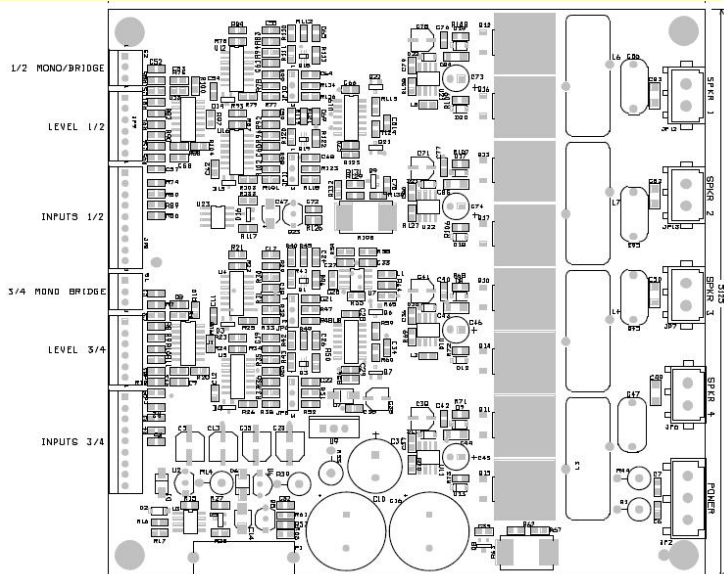




## D150C4A

### 4 – ch. PWM Amplifier

(provisional info)



## D150C4A specs

Rated power 4 ohms	4 x 150W or 2 x 3000W
Power supply max.	2 x 35V DC
Aux. supply	16V DC
Freq. Range (+0, -1dB)	20 – 20.000 Hz
THD + N	0.02% typ.
Dynamic Range	110 dB typ.
Max. output current	20A
Min. load impedance	4 ohms
Damping Factor	400 typ.
Input voltage	1V - 10 k - balanced
Operation	4 ch Half bridge amplifier
DC-servo	yes
Peak limiter	yes
Dimensions	135 x 135 x 25mm
Heatsink	Not required
Available as sample	yes
Available as OEM design	yes

D150C4A is a PWM /Class-D amplifier designed to give very high performance in audio quality and to deal with all aspects of amplifier use and applications including amplifier + power supply combination, multichannel use , active crossover use, etc.

Power output is 4 x 150 W into 4 ohms or 2 x 300W into 8 ohms , overcurrent protection is likely to operate with continuous high power levels into 1,6 ohms stereo or 3,2 ohms mono.

D150C4A is a full bandwidth module (20 kHz power bw) and can be used for a broad range of applications from HIFI, Home Cinema to Pro Audio, Active Speakers, Installation... Sound quality is very good indeed and THD + N is 0.02% or better.

The D150C4A can be powered from a linear supply or from a switch-mode supply .

D150C4A has these connections:

- \* Balanced input header
- \* +/- 15V supply for preamp, crossover etc.
- \* Power input (4-pin connector) 2 x 35VDC + 15VDC
- \* Speaker outputs